

IMPERIAL
 DISTANCES AND COORDINATES SHOWN ON THIS PLAN ARE IN FEET AND CAN BE CONVERTED TO METRES BY MULTIPLYING BY 0.3048.

OBSERVED REFERENCE POINTS (ORP) DERIVED FROM GPS OBSERVATIONS USING THE PRECISE POINT POSITIONING (PPP) SERVICE, UTM ZONE 17 NAD83 (CRS), EPOCH 1997. COORDINATES TO RURAL ACCURACY PER SECTION 14 (2) OF O.REG. 216/10.

POINT ID	NORTHING	EASTING
ORP 1	18,384,438.5	2,042,859.9
ORP 2	18,384,458.9	2,042,207.3
ORP 3	18,384,138.5	2,042,207.3

COORDINATES CANNOT, IN THEMSELVES, BE USED TO RE-ESTABLISH CORNERS OR BOUNDARIES ON THIS PLAN.

BEARING NOTE
 BEARINGS ARE UTM GRID DERIVED FROM ORP 1 & ORP 2 SHOWN HEREON REFERRED TO THE CENTRAL MERIDIAN OF UTM ZONE 17 (NAD83 LONGITUDE) NAD83 (CRS), EPOCH 1997.0.

ROTATION NOTE
 FOR BEARING COMPARISONS, A ROTATION OF 103.12° COUNTER CLOCKWISE WAS APPLIED TO PLAN 35R-18895 TO CONVERT TO UTM BEARINGS.
 FOR BEARING COMPARISONS, A ROTATION OF 141.15° COUNTER CLOCKWISE WAS APPLIED TO PLAN 35R-10079 TO CONVERT TO UTM BEARINGS.
 FOR BEARING COMPARISONS, A ROTATION OF 139.07° COUNTER CLOCKWISE WAS APPLIED TO PLAN 35R-10041 TO CONVERT TO UTM BEARINGS.

SCALE FACTOR NOTE
 DISTANCES ON THIS PLAN ARE HORIZONTAL GROUND DISTANCES AND CAN BE CONVERTED TO UTM DISTANCES BY MULTIPLYING BY THE AVERAGE CORRECTED SCALE FACTOR OF 0.999748.

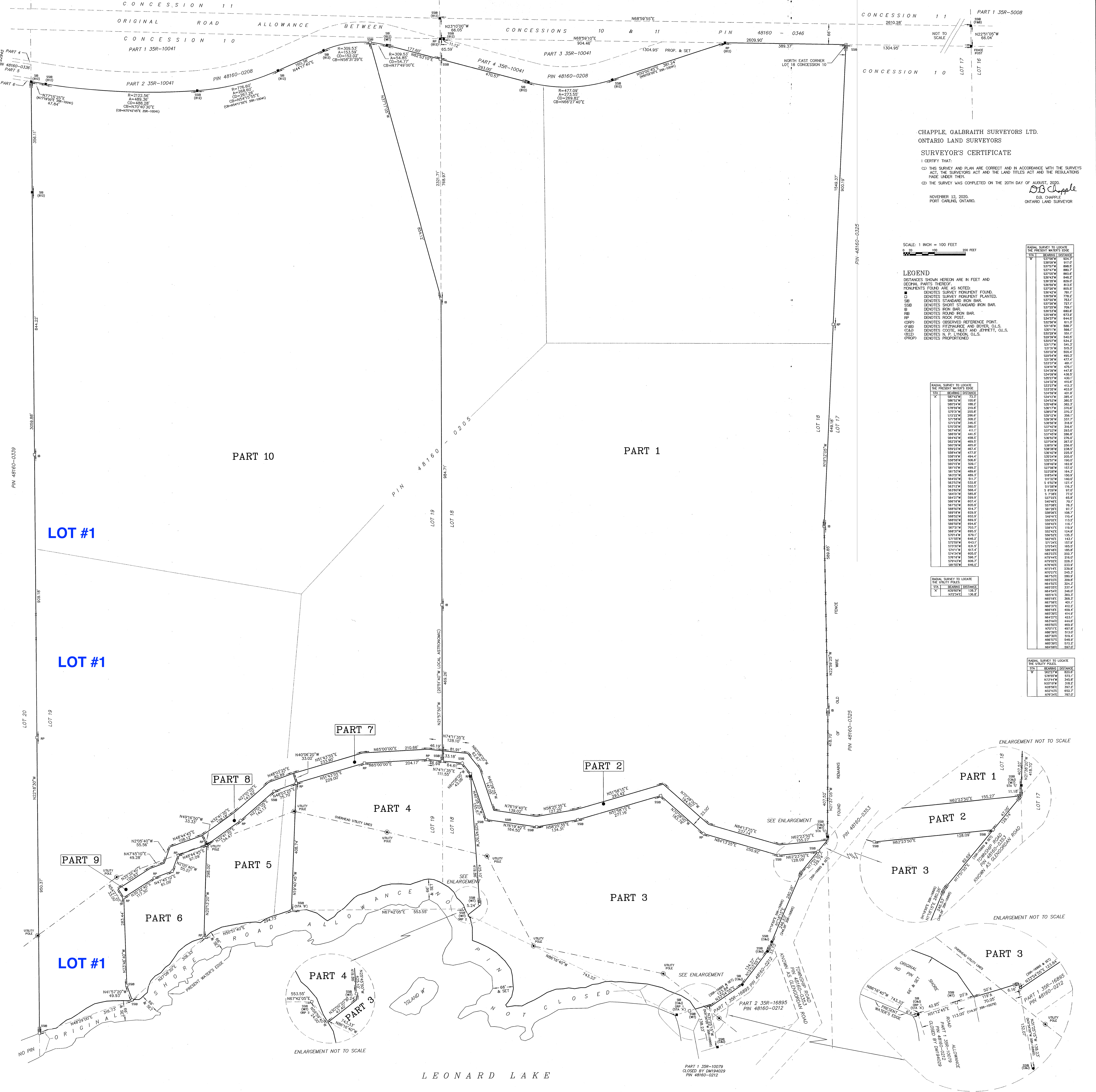
WATER BOUNDARY NOTE
 THE WATER'S EDGE OF LEONARD LAKE AS ESTABLISHED BY SURVEY AND SHOWN ON THIS PLAN HAS BEEN ACCEPTED AS BEING THE BEST AVAILABLE EVIDENCE OF THE EDGE OF THIS LAKE AS IT EXISTED AT THE TIME OF THE ORIGINAL SURVEY OF MONCK TOWNSHIP.

PLAN OF SURVEY
 OF PART OF
LOTS 18 & 19, CONCESSION 10
 GEOGRAPHIC TOWNSHIP OF MONCK
TOWNSHIP OF MUSKOKA LAKES
 DISTRICT MUNICIPALITY OF MUSKOKA

DATE: NOVEMBER 12, 2020
 RECEIVED AND RECORDED
 DATE: NOVEMBER 17TH, 2020
 O. S. CHAPPEL
 ONTARIO LAND SURVEYOR

PLAN 35R-26369

SCHEDULE			
PART	PART LOT	CONCESSION	PN
1	18		
2	18		
3	18 & 19		
4	18 & 19	10	ALL OF 48160-0205
5	19		
6			
7			
8			
9			
10			



CHAPPEL, GALBRAITH SURVEYORS LTD.
 ONTARIO LAND SURVEYORS
 SURVEYOR'S CERTIFICATE

I CERTIFY THAT:
 (1) THIS SURVEY AND PLAN ARE CORRECT AND IN ACCORDANCE WITH THE SURVEY ACT AND THE REGULATIONS MADE UNDER THEREOF.
 (2) THE SURVEY WAS COMPLETED ON THE 20TH DAY OF AUGUST, 2020.

NOVEMBER 12, 2020.
 PORT CARLING, ONTARIO.

O.S. Chapple
 ONTARIO LAND SURVEYOR

SCALE: 1 INCH = 100 FEET
 0 20 40 80 160 320 FEET

LEGEND
 DISTANCES SHOWN HEREON ARE IN FEET AND DECIMAL PARTS THEREOF.
 MONUMENTS FOUND ARE AS NOTED:
 ■ DENOTES SURVEY MONUMENT FOUND.
 □ DENOTES SURVEY MONUMENT PLANTED.
 S DENOTES STANDING IRON BAR.
 SSB DENOTES SHORT STANDARD IRON BAR.
 S DENOTES IRON NAIL.
 RB DENOTES ROUND IRON BAR.
 RP DENOTES ROUND IRON POST.
 ORP DENOTES OBSERVED REFERENCE POINT.
 (ORP) DENOTES FITZMAURICE AND BOTER OILS.
 (CALD) DENOTES COOTE, HESL AND ZEMMETT, OILS.
 (HLD) DENOTES N. P. LYNDEN, OILS.
 (ORP) DENOTES PROPOSED POINT.

RADIAL SURVEY TO LOCATE THE PRESENT WATER'S EDGE

STATION	BEARING	DISTANCE
S1702W	N77°50'W	924.7
S1703W	N77°50'W	914.7
S1704W	N77°50'W	904.7
S1705W	N77°50'W	894.7
S1706W	N77°50'W	884.7
S1707W	N77°50'W	874.7
S1708W	N77°50'W	864.7
S1709W	N77°50'W	854.7
S1710W	N77°50'W	844.7
S1711W	N77°50'W	834.7
S1712W	N77°50'W	824.7
S1713W	N77°50'W	814.7
S1714W	N77°50'W	804.7
S1715W	N77°50'W	794.7
S1716W	N77°50'W	784.7
S1717W	N77°50'W	774.7
S1718W	N77°50'W	764.7
S1719W	N77°50'W	754.7
S1720W	N77°50'W	744.7
S1721W	N77°50'W	734.7
S1722W	N77°50'W	724.7
S1723W	N77°50'W	714.7
S1724W	N77°50'W	704.7
S1725W	N77°50'W	694.7
S1726W	N77°50'W	684.7
S1727W	N77°50'W	674.7
S1728W	N77°50'W	664.7
S1729W	N77°50'W	654.7
S1730W	N77°50'W	644.7
S1731W	N77°50'W	634.7
S1732W	N77°50'W	624.7
S1733W	N77°50'W	614.7
S1734W	N77°50'W	604.7
S1735W	N77°50'W	594.7
S1736W	N77°50'W	584.7
S1737W	N77°50'W	574.7
S1738W	N77°50'W	564.7
S1739W	N77°50'W	554.7
S1740W	N77°50'W	544.7
S1741W	N77°50'W	534.7
S1742W	N77°50'W	524.7
S1743W	N77°50'W	514.7
S1744W	N77°50'W	504.7
S1745W	N77°50'W	494.7
S1746W	N77°50'W	484.7
S1747W	N77°50'W	474.7
S1748W	N77°50'W	464.7
S1749W	N77°50'W	454.7
S1750W	N77°50'W	444.7
S1751W	N77°50'W	434.7
S1752W	N77°50'W	424.7
S1753W	N77°50'W	414.7
S1754W	N77°50'W	404.7
S1755W	N77°50'W	394.7
S1756W	N77°50'W	384.7
S1757W	N77°50'W	374.7
S1758W	N77°50'W	364.7
S1759W	N77°50'W	354.7
S1760W	N77°50'W	344.7
S1761W	N77°50'W	334.7
S1762W	N77°50'W	324.7
S1763W	N77°50'W	314.7
S1764W	N77°50'W	304.7
S1765W	N77°50'W	294.7
S1766W	N77°50'W	284.7
S1767W	N77°50'W	274.7
S1768W	N77°50'W	264.7
S1769W	N77°50'W	254.7
S1770W	N77°50'W	244.7
S1771W	N77°50'W	234.7
S1772W	N77°50'W	224.7
S1773W	N77°50'W	214.7
S1774W	N77°50'W	204.7
S1775W	N77°50'W	194.7
S1776W	N77°50'W	184.7
S1777W	N77°50'W	174.7
S1778W	N77°50'W	164.7
S1779W	N77°50'W	154.7
S1780W	N77°50'W	144.7
S1781W	N77°50'W	134.7
S1782W	N77°50'W	124.7
S1783W	N77°50'W	114.7
S1784W	N77°50'W	104.7
S1785W	N77°50'W	94.7
S1786W	N77°50'W	84.7
S1787W	N77°50'W	74.7
S1788W	N77°50'W	64.7
S1789W	N77°50'W	54.7
S1790W	N77°50'W	44.7
S1791W	N77°50'W	34.7
S1792W	N77°50'W	24.7
S1793W	N77°50'W	14.7
S1794W	N77°50'W	4.7

RADIAL SURVEY TO LOCATE THE UTILITY POLES

STATION	BEARING	DISTANCE
S1795W	N77°50'W	904.7
S1796W	N77°50'W	894.7
S1797W	N77°50'W	884.7
S1798W	N77°50'W	874.7
S1799W	N77°50'W	864.7
S1800W	N77°50'W	854.7
S1801W	N77°50'W	844.7
S1802W	N77°50'W	834.7
S1803W	N77°50'W	824.7
S1804W	N77°50'W	814.7
S1805W	N77°50'W	804.7
S1806W	N77°50'W	794.7
S1807W	N77°50'W	784.7
S1808W	N77°50'W	774.7
S1809W	N77°50'W	764.7
S1810W	N77°50'W	754.7
S1811W	N77°50'W	744.7
S1812W	N77°50'W	734.7
S1813W	N77°50'W	724.7
S1814W	N77°50'W	714.7
S1815W	N77°50'W	704.7
S1816W	N77°50'W	694.7
S1817W	N77°50'W	684.7
S1818W	N77°50'W	674.7
S1819W	N77°50'W	664.7
S1820W	N77°50'W	654.7
S1821W	N77°50'W	644.7
S1822W	N77°50'W	634.7
S1823W	N77°50'W	624.7
S1824W	N77°50'W	614.7
S1825W	N77°50'W	604.7
S1826W	N77°50'W	594.7
S1827W	N77°50'W	584.7
S1828W	N77°50'W	574.7
S1829W	N77°50'W	564.7
S1830W	N77°50'W	554.7
S1831W	N77°50'W	544.7
S1832W	N77°50'W	534.7
S1833W	N77°50'W	524.7
S1834W	N77°50'W	514.7
S1835W	N77°50'W	504.7
S1836W	N77°50'W	494.7
S1837W	N77°50'W	484.7
S1838W	N77°50'W	474.7
S1839W	N77°50'W	464.7
S1840W	N77°50'W	454.7
S1841W	N77°50'W	444.7
S1842W	N77°50'W	434.7
S1843W	N77°50'W	424.7
S1844W	N77°50'W	414.7
S1845W	N77°50'W	404.7
S1846W	N77°50'W	394.7
S1847W	N77°50'W	384.7
S1848W	N77°50'W	374.7
S1849W	N77°50'W	364.7
S1850W	N77°50'W	354.7
S1851W	N77°50'W	344.7
S1852W	N77°50'W	334.7
S1853W	N77°50'W	324.7
S1854W	N77°50'W	314.7
S1855W	N77°50'W	304.7
S1856W	N77°50'W	294.7
S1857W	N77°50'W	284.7
S1858W	N77°50'W	274.7
S1859W	N77°50'W	264.7
S1860W	N77°50'W	254.7
S1861W	N77°50'W	244.7
S1862W	N77°50'W	234.7
S1863W	N77°50'W	224.7
S1864W	N77°50'W	214.7
S1865W	N77°50'W	204.7
S1866W	N77°50'W	194.7
S1867W	N77°50'W	184.7
S1868W	N77°50'W	174.7
S1869W	N77°50'W	164.7
S1870W	N77°50'W	154.7
S1871W	N77°50'W	144.7
S1872W	N77°50'W	134.7
S1873W	N77°50'W	124.7
S1874W	N77°50'W	114.7
S1875W	N77°50'W	104.7
S1876W	N77°50'W	94.7
S1877W	N77°50'W	84.7
S1878W	N77°50'W	74.7
S1879W	N77°50'W	64.7
S1880W	N77°50'W	54.7
S1881W	N77°50'W	44.7
S1882W	N77°50'W	34.7
S1883W	N77°50'W	24.7
S1884W	N77°50'W	14.7
S1885W	N77°50'W	4.7