

54-183

Om lddob

CONCESSION 111
BETWEEN CONCESSIONS 111 & 114

CONCESSION 114

CONCESSION 113

CONCESSION 112

CONCESSION 111

CONCESSION 110

CONCESSION 109

CONCESSION 108

CONCESSION 107

CONCESSION 106

CONCESSION 105

CONCESSION 104

CONCESSION 103

CONCESSION 102

CONCESSION 101

CONCESSION 100

CONCESSION 99

CONCESSION 98

CONCESSION 97

CONCESSION 96

CONCESSION 95

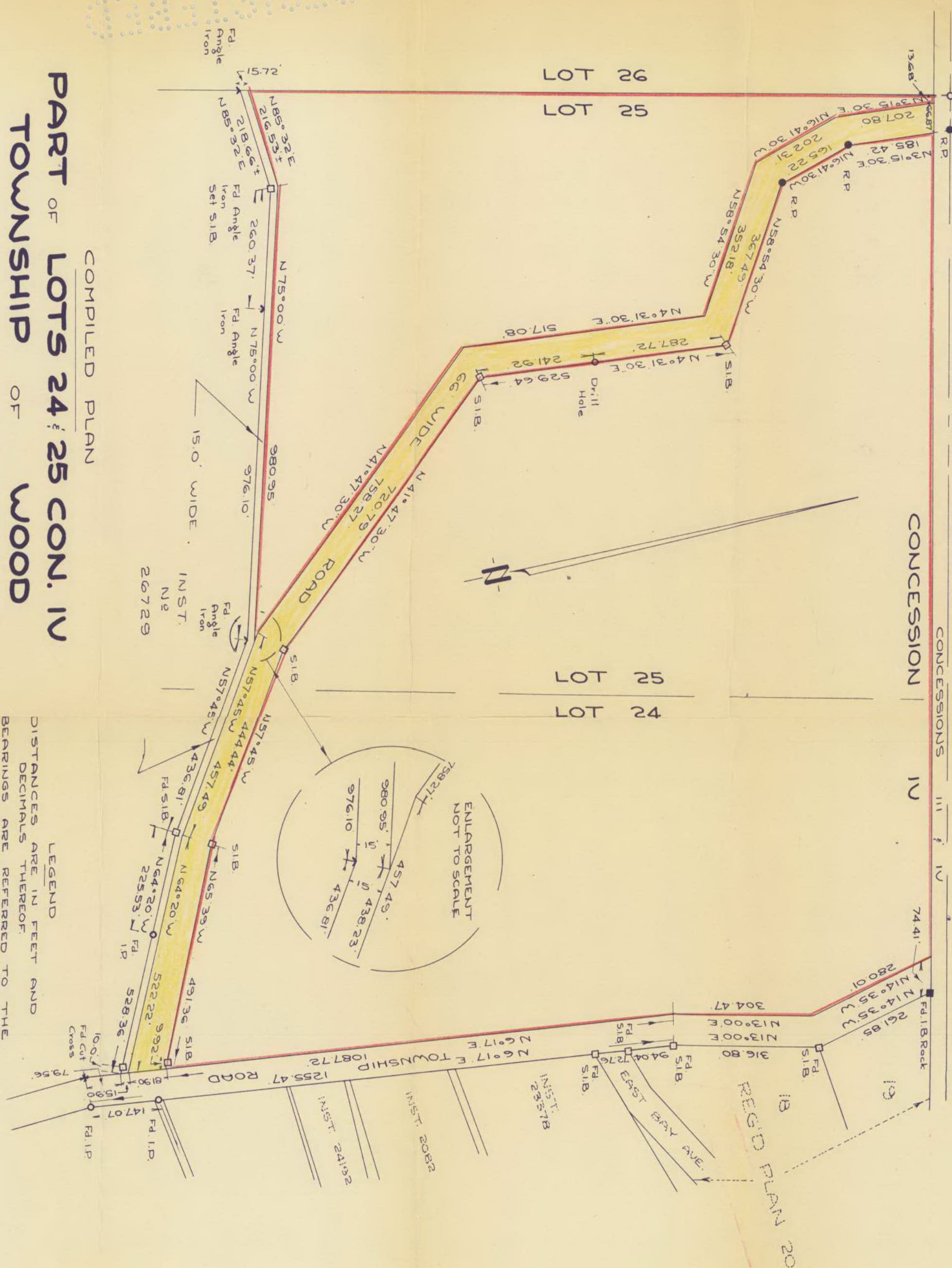
CONCESSION 94

CONCESSION 93

ROAD ALLOWANCE

LOT 26
LOT 25

LOT 25
LOT 24



COMPILED PLAN
 PART OF LOTS 24 & 25 CON. 114
 TOWNSHIP OF WOOD
 DISTRICT OF MUSKOKA
 SCALE - 1" = 100'

LEGEND
 DISTANCES ARE IN FEET AND DECIMALS THEREOF.
 BEARINGS ARE REFERRED TO THE BEARING N60°17'E OF THE EAST LIMIT OF THE TOWNSHIP ROAD SHOWN HEREON.
 S.I.B. DENOTES STANDARD IRON BAR 1" x 1" x 48"
 R.P. ROCK POST
 I.P. IRON POST
 I.B. ROCK 1" x 1" x 6" IRON BAR SET IN ROCK

BRACEBRIDGE, ONTARIO
 JULY 11, 1963

N.P. Lyndon
 ONTARIO LAND SURVEYOR