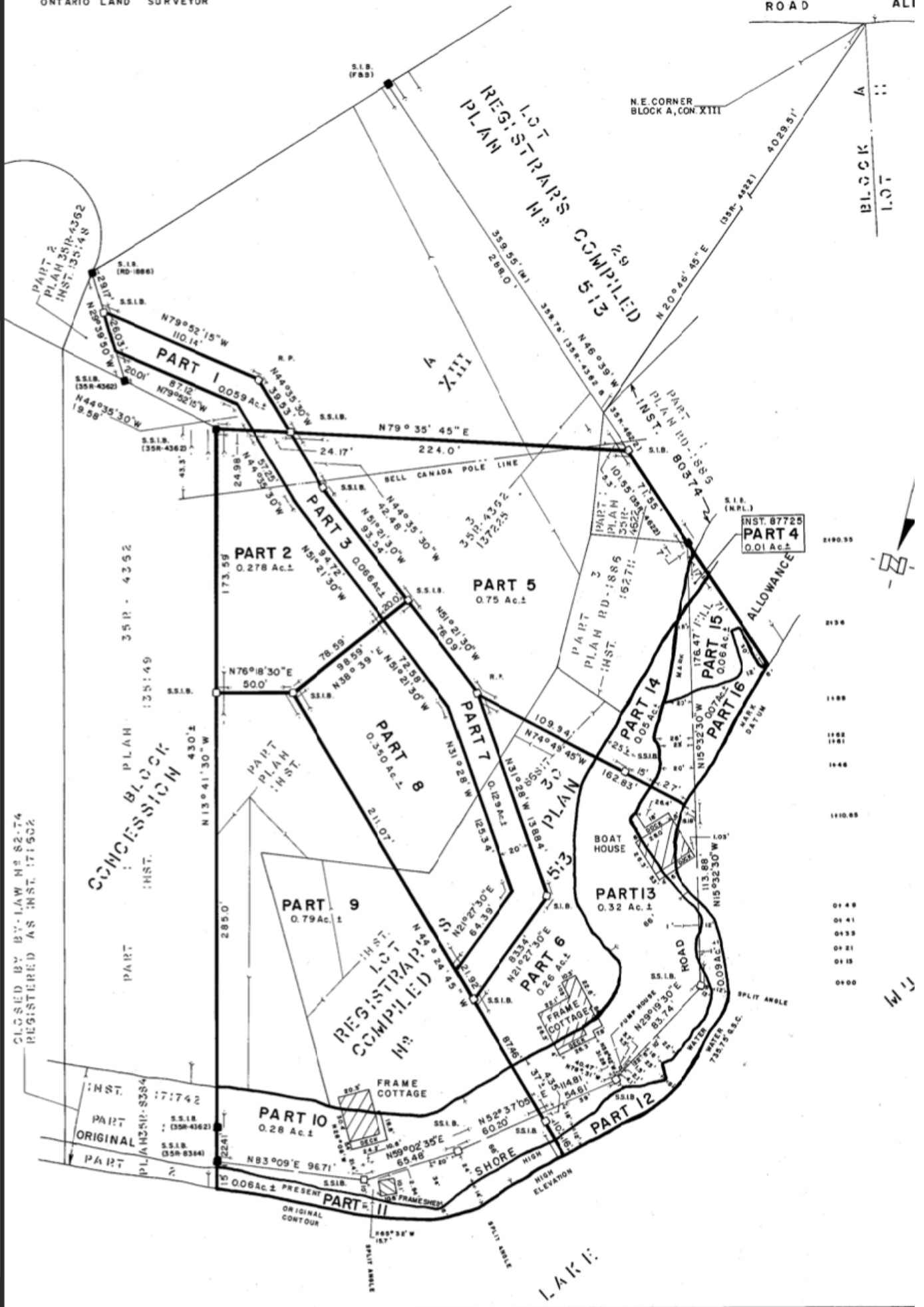


N.P. Lyndon
N. P. LYNDON
ONTARIO LAND SURVEYOR

PLAN 35R-11063
FEB. 12, 1987

ORIGINAL S1

ROAD ALI



CLOSED BY BY-LAW N^o 82-74
REGISTERED AS INST. 171502

CONCESSION
BLOCK
INST. 135149

REGISTRATION
COMPLETED
N^o 513

REGISTRATION
COMPLETED
N^o 513

INST. 87725
PART 4
0.01 Ac.±

INST. 171742
PART
ORIGINAL
PLAN 25R-3384

PART 10
0.28 Ac.±

PART 12

2890.50
2850
1180
1182
1181
1140
1110.85
0148
0141
0135
0121
0115
0100



M J J

LAKI