

20043

PLAN 35R-20043

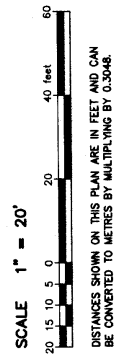
RECEIVED AND DEPOSITED UNDER THE REGISTRY ACT.
DATE: OCTOBER 21, 2003
John W. Hiley
JOHN W. HILEY O.L.S.

DATE: NOVEMBER 2, 2003
Mary C. Chapple
MARY C. CHAPPLE O.L.S.

ASSISTANT DEPUTY REGISTRAR OF THE REGISTRY DIVISION OF MUSKOKA

PART	LOT	CON.	INST.	SCHEDULE	AREA
1	Part of 20 (Portions of which are shown by By-law 70-33, 349708)		G		14300 ft ²
2	Part of 20				1650 ft ²

PLAN OF SURVEY OF
PART OF LOT 20, CONCESSION G
 (A portion of which was closed by By-law 70-33,
 Registered as Instrument 80081)
 GEOGRAPHIC TOWNSHIP OF MEDORA
 TOWNSHIP OF MUSKOKA LAKES
 DISTRICT MUNICIPALITY OF MUSKOKA
 COOTE, HILEY, JEMMETT LIMITED



LEGEND

- MONUMENT PLANTED
- MONUMENT FOUND
- ▬ SURVEY STANDARD IRON BAR
- IT IRON TUBE
- F&B FITZMAURICE & BOYER O.L.S.
- SSZ SURVEYORS SOCIETY OF CANADA
- MTD MINISTRY OF TRANSPORTATION ONTARIO
- OU ORIGIN UNKNOWN

BEARINGS ARE ASTRONOMIC AND ARE REFERRED TO THE SOUTHWESTERLY LIMIT OF PART 2 AS SHOWN ON PLAN RP-646 HAVING A BEARING OF N50°31'W.

SURVEYOR'S CERTIFICATE

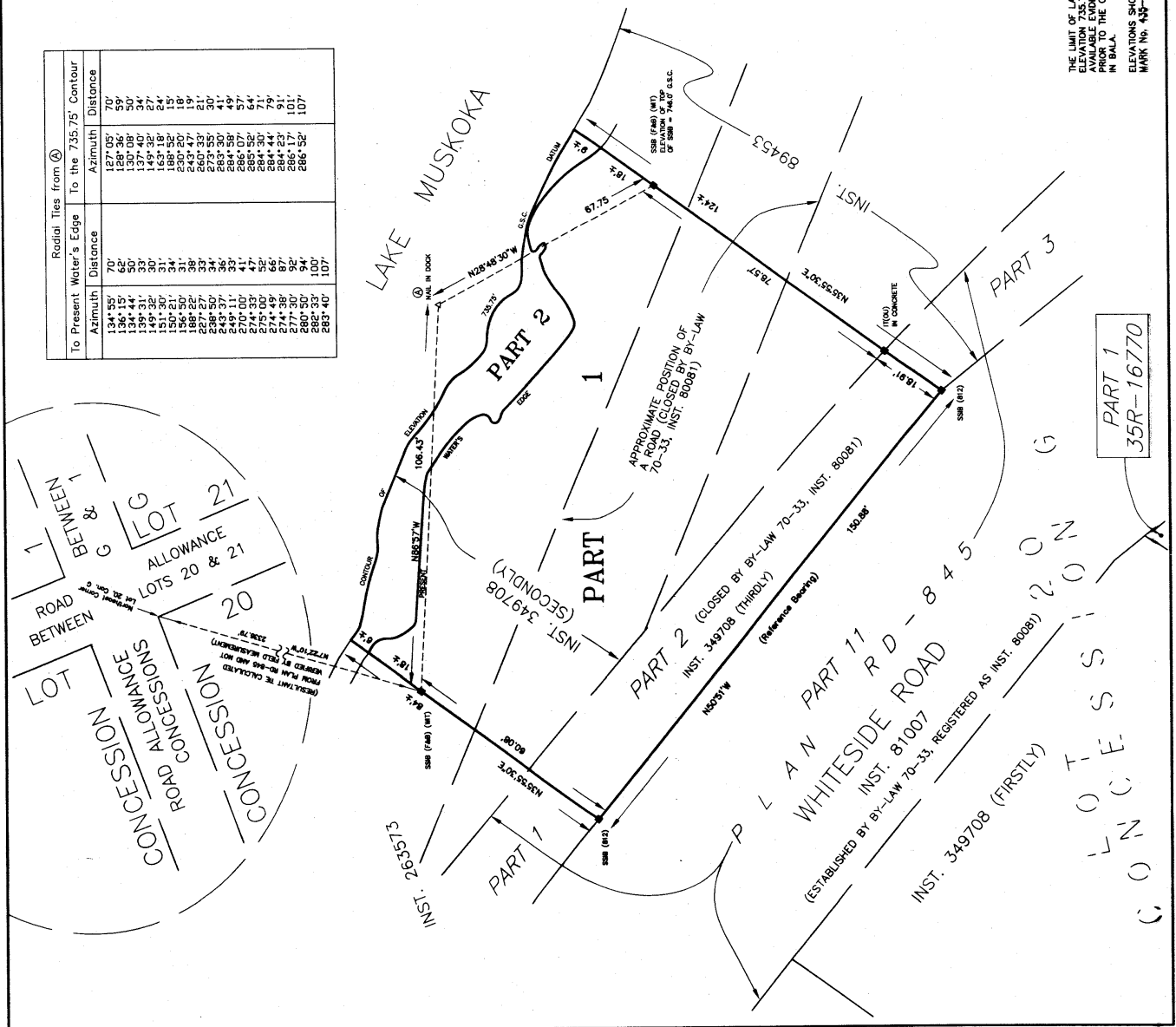
I CERTIFY THAT:
 1 - THIS SURVEY AND PLAN ARE CORRECT AND IN ACCORDANCE WITH THE SURVEYS ACT, THE SURVEYORS ACT AND THE REGISTRY ACT AND THE REGULATIONS MADE UNDER THEM.
 2 - THE SURVEY WAS COMPLETED ON THE 12th DAY OF AUGUST, 2003.

OCTOBER 21, 2003
 BRACEBRIDGE, ONTARIO
John W. Hiley
 JOHN W. HILEY
 ONTARIO LAND SURVEYOR

COOTE, HILEY, JEMMETT LIMITED
 ONTARIO LAND SURVEYORS
 www.muskoka-surveys.com e-mail: surveys@muskocasuretors.com
 6 Dufferin Street, Unit 3 Phone: (705) 845-1411
 Bracebridge, ON (800) 494-1443
 P.O. Box 246 Fax: (705) 845-1845

Radial Ties from (A) To Present Water's Edge To the 735.75' Contour

Azimuth	Distance	Azimuth	Distance
134° 55'	70'	127° 05'	70'
136° 15'	62'	128° 36'	59'
139° 31'	33'	137° 40'	34'
149° 32'	30'	149° 32'	27'
151° 30'	31'	159° 58'	15'
156° 50'	31'	230° 20'	18'
188° 22'	38'	243° 47'	19'
227° 27'	32'	273° 55'	30'
243° 37'	56'	283° 30'	41'
249° 11'	33'	284° 19'	57'
254° 33'	47'	285° 52'	64'
275° 00'	52'	284° 30'	71'
274° 49'	66'	284° 23'	91'
277° 30'	52'	286° 17'	101'
280° 50'	94'	286° 52'	107'
282° 33'	100'		
283° 40'	107'		



THE LIMIT OF LAKE MUSKOKA, RE-ESTABLISHED AT CONTOUR OF ELEVATION 735.75' GSC DATUM, AS SHOWN HEREON IS THE BEST AVAILABLE EVIDENCE OF THE WATER'S EDGE EXISTING IMMEDIATELY PRIOR TO THE CONTROLLING OF THE WATER LEVEL BY THE DAM IN BALLA.
 ELEVATIONS SHOWN HEREON ARE REFERRED TO MTD PRECISE BENCH MARK NO. 448-71, HAVING AN ELEVATION OF 744.85' GSC DATUM.

PART 1
 35R-16770