

IMPERIAL

DISTRICTS SHOWN ON THIS PLAN ARE
FIELD LOCATIONS CORRECTED TO
VALUES BY DISTRICTS BY 0.3648

THIS REPORT WAS PROVIDED FOR PRELIMINARY
AND THE UNDERSIGNED ACCEPTS NO
RESPONSIBILITY FOR USE BY OTHER PARTIES.

PART 2

THIS PLAN MUST BE READ IN CONJUNCTION WITH
SHEET REPORT DATED JANUARY 7, 2015.

LEGEND

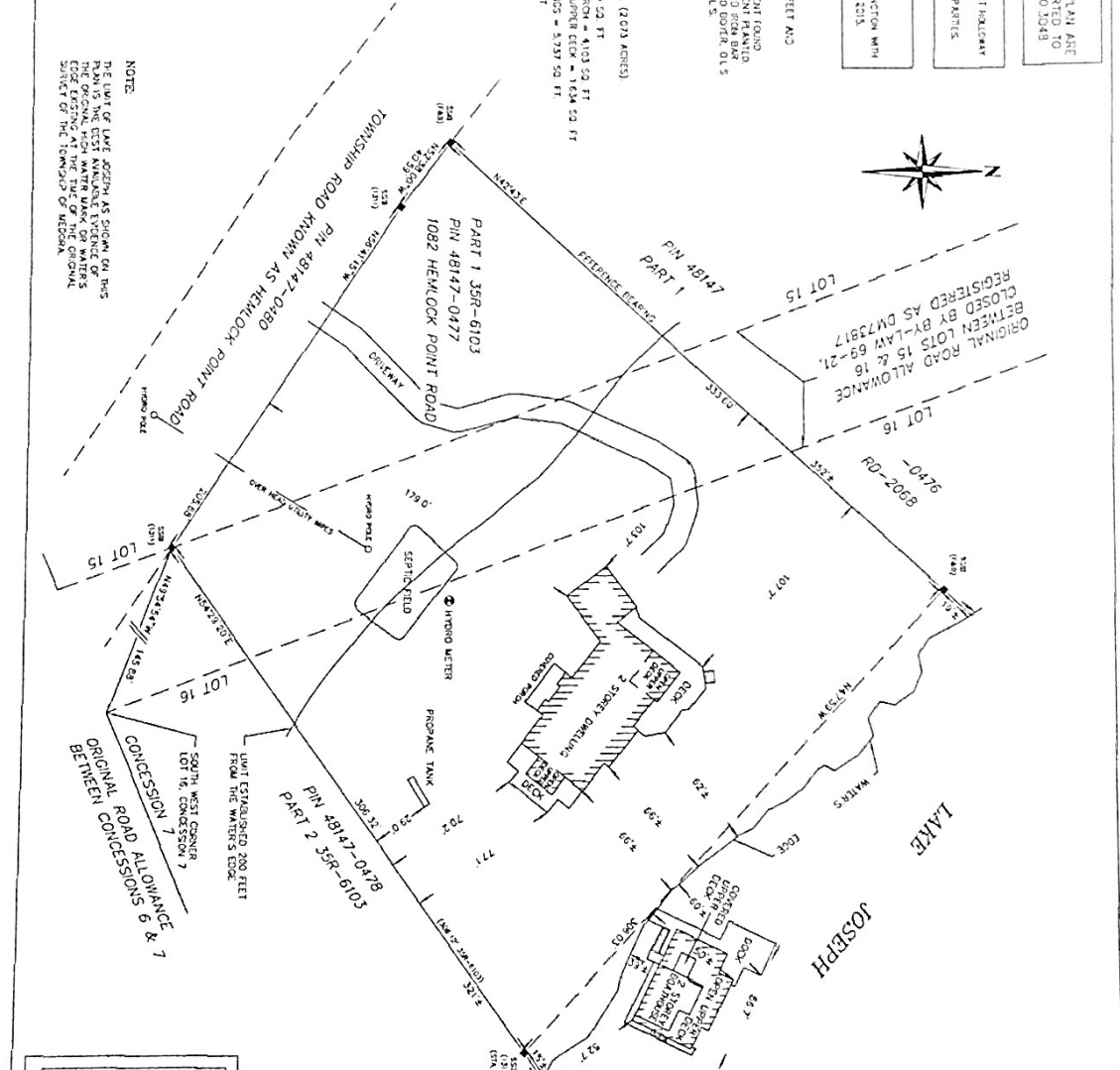
- REFERS TO SPAN AREA IN FEET AND
- EQUAL PARTS TO BE
- WHERE THIS TO ADJUST AS NOTED
- CONJECTURED
- ENGINEER'S SURVEY MONUMENT PLANTED
- CONJECTURED
- ENGINEER'S MONUMENT PLANTED
- (1.5) ENGINEER'S MONUMENT PLANTED

AREA SCHEDULE

AREA OF PARCEL = 50,350 SQ. FT. (1.15 ACRES)
AREA OF PARCEL 201 FEET 29,329 SQ. FT.
AREA OF PARCEL 401 FEET 4,103 SQ. FT.
AREA OF PARCEL 301 FEET 1,634 SQ. FT.
TOTAL FOOTPRINT AREA OF BUILDINGS = 5,337 SQ. FT.
STRAIGHT LINE DIMENSION = 309 FT.

PARCEL CORNER TO LOCATE	SIDE	MEASURED DISTANCE
A	N 72° 31' E	19.7
	N 14° 12' W	32.4
	N 12° 10' W	43.4
	N 12° 52' W	42.1
	N 44° 52' W	244.6
	N 44° 21' W	234.7
	N 44° 24' W	203.9
	N 42° 22' W	234.9
	N 42° 22' W	232.6
	N 42° 22' W	234.9
	N 42° 22' W	232.6
	N 42° 22' W	234.9
	N 42° 22' W	232.6
	N 42° 22' W	234.9
	N 42° 22' W	232.6
	N 42° 22' W	234.9
	N 42° 22' W	232.6
	N 42° 22' W	234.9
	N 42° 22' W	232.6
	N 42° 22' W	234.9
	N 42° 22' W	232.6
	N 42° 22' W	234.9

NOTE:
THE LIMIT OF LIFT JOSEPH AS SHOWN ON THIS
PLAN IS THE ORIGINAL HIGH WATER MARK OF JOSEPH
LAKE EXISTING AT THE TIME OF THE ORIGINAL
SHEET OF THE TOWNSHIP OF MEDORA.



SURVEYOR'S REAL PROPERTY REPORT
PART 1
PLAN OF SURVEY
OF PART OF
LOTS 15 & 16, CONCESSION 7
AND PART OF THE
ORIGINAL ROAD ALLOWANCE
BETWEEN LOTS 15 & 16
LYING IN FRONT OF CONCESSION 7
CLOSED BY BY-LAW 69-21, REGISTERED AS DM73817
GEOGRAPHIC TOWNSHIP OF MEDORA
TOWNSHIP OF MUSKOKA LAKES
DISTRICT MUNICIPALITY OF MUSKOKA



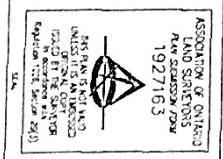
CHAPPLE, GALBRAITH SURVEYORS LTD
ONTARIO LAND SURVEYORS
© COPYRIGHT 2015

SURVEYORS CERTIFICATE

- (1) I CERTIFY THAT
- (2) THE SURVEY WAS COMPLETED ON THE 15th DAY OF DECEMBER, 2014.

DATE: JANUARY 7, 2015
BY: B.B. CHAPPLE
ONTOARIO LAND SURVEYOR

NOTE:
RELATES SHOWN ON THIS PLAN ARE AS SHOWN AND ARE REFERRED
TO THE CORRESPONDING PART OF PART 1 PLAN 358-6103 HAVING
A EASING OF INTEREST AS SHOWN HEREON.



CHAPPLE, GALBRAITH SURVEYORS LTD
ONTARIO LAND SURVEYORS
2 BAILEY STREET, P.O. BOX 496
PORT CARLING, ONTARIO, P0B 1N0
TEL: (705) 765-3270 FAX: (705) 765-3252