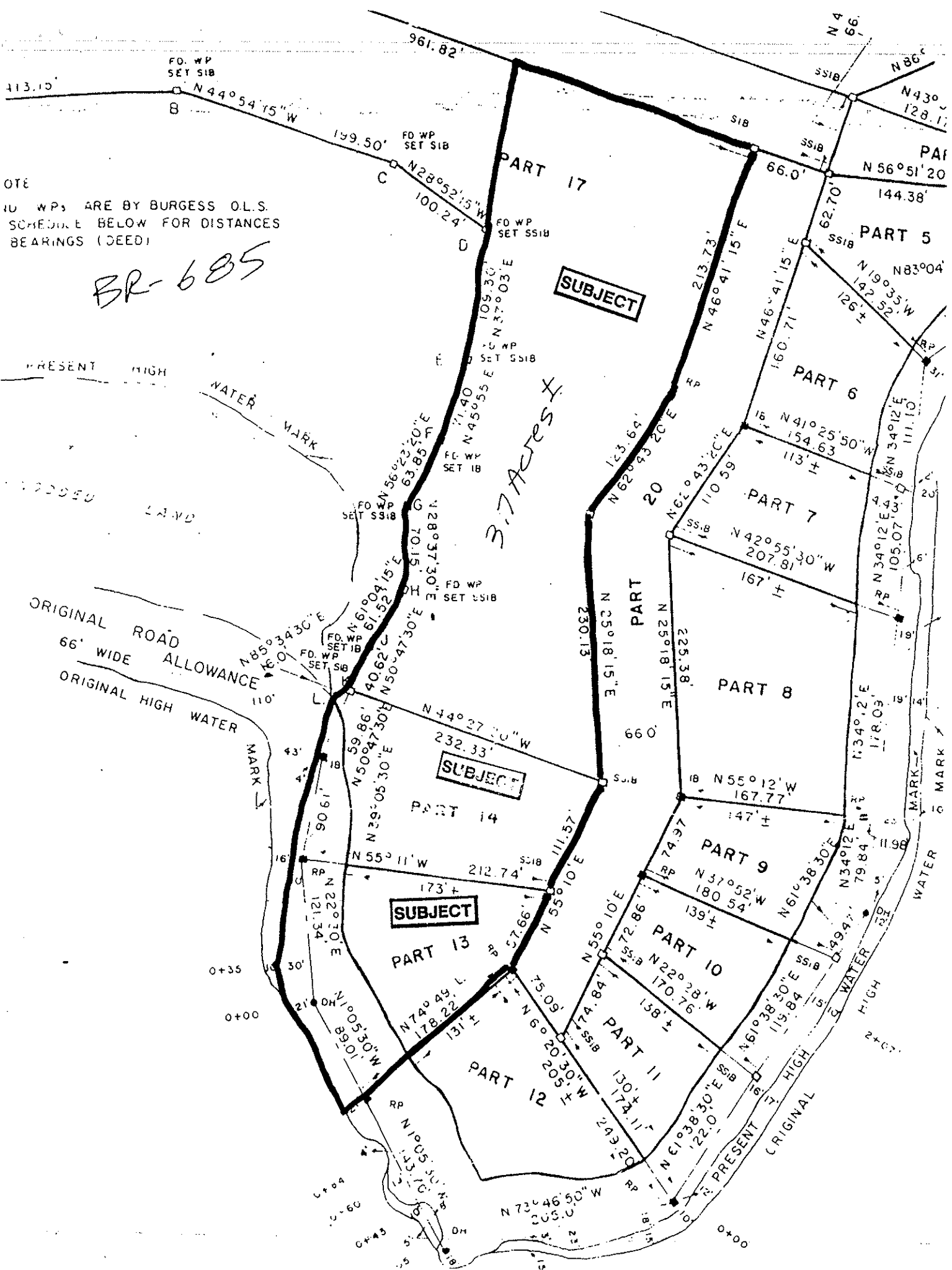


LAKES

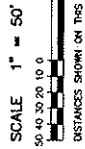
NOTE
 ID WPS ARE BY BURGESS O.L.S.
 SCHEDULE BELOW FOR DISTANCES
 BEARINGS (DEED)

BR-685

3.7 Acres ±



SURVEYOR'S REAL PROPERTY REPORT (PART 1)
PLAN OF SURVEY OF
PART OF BLOCK A, CONCESSION 13 and
PART OF THE ORIGINAL SHORE ROAD
ALLOWANCE IN FRONT THEREOF
 (Closed by By-law 81-12, Attached to L7104916)
GEOGRAPHIC TOWNSHIP OF MUSKOKA
TOWN OF BRACEBRIDGE
 DISTRICT MUNICIPALITY OF MUSKOKA
 COOTE, HILEY, JEMMETT LIMITED



SCALE 1" = 50'

BEARINGS ARE ASTROMERIC AND ARE REFERRED TO THAT PART OF THE EASTERY BENT OF PART 9 AS SHOWN ON PLAN 35R-16683 HAVING A BEARING OF N107°10'10"E. ALL BEARING TIES SHOWN HEREON ARE TO THE FACE OF THE BRING UNLESS OTHERWISE NOTED.

- LEGEND**
- ▣ MEASUREMENT PLANTED
 - ▣ MONUMENT FOUND
 - ▣ STANDARD IRON BAR
 - ▣ SHORT PAST PANDAIDOR ROVI BAR
 - ▣ ROCK POST
 - ▣ N.P. IRON O.L.S.
 - ▣ N.P. CEMENT U.P.S.
 - ▣ REGISTERED COMPASSED PLAN

PART 2
 THIS PLAN MUST BE READ IN CONJUNCTION WITH A SURVEY REPORT DATED JANUARY 10, 2006.

THIS REPORT WAS PREPARED FOR FENOXI FANSEAY WANG & WONG JESSICA SUN AND THE UNDERSIGNED ACCEPTS NO RESPONSIBILITY FOR USE BY OTHER PARTIES.

SURVEYOR'S CERTIFICATE

I CERTIFY THAT:
 1 - THIS SURVEY AND PLAN ARE CORRECT AND IN ACCORDANCE WITH THE SURVEY ACT, THE REGULATIONS MADE UNDER THEREIN AND THE REGULATIONS MADE UNDER THEREIN.
 2 - THE SURVEY WAS COMPLETED ON THE 3rd DAY OF JANUARY, 2006.

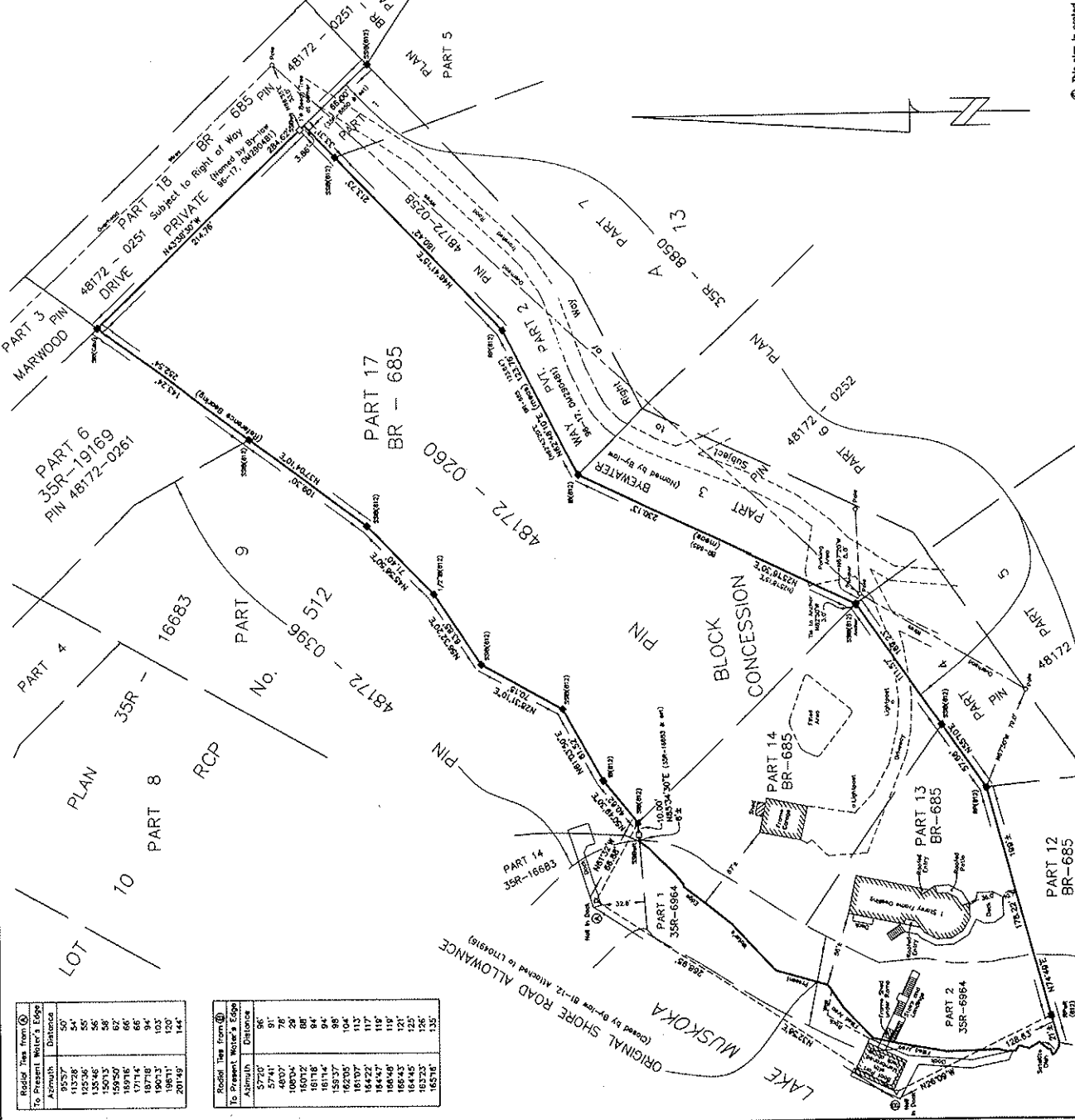
JANUARY 10, 2006
 BRACEBRIDGE, ONTARIO

John W. Hiley
 ONTARIO LAND SURVEYOR



COOTE, HILEY, JEMMETT LIMITED
ONTARIO LAND SURVEYORS
 www.muskokalandsurveyors.com e-mail: survey@hijemmett.com
 11 Dundas Street East Unit 3 | Phone: (705) 845-4471

© This plan is protected by copyright.



Roads: True from (D)	To Present Water's Edge	Asimuth	Distance
50'	9557'	135°36'	55'
55'	13536'	135°36'	55'
58'	15073'	135°36'	58'
62'	15850'	135°36'	62'
66'	17114'	135°36'	66'
94'	18778'	135°36'	94'
103'	19073'	135°36'	103'
120'	19811'	135°36'	120'
144'	20749'	135°36'	144'

Roads: True from (D)	To Present Water's Edge	Asimuth	Distance
8'	5720'	135°36'	8'
76'	4937'	135°36'	76'
29'	10824'	135°36'	29'
88'	16072'	135°36'	88'
84'	18176'	135°36'	84'
88'	19337'	135°36'	88'
104'	16220'	135°36'	104'
113'	18107'	135°36'	113'
117'	16422'	135°36'	117'
118'	18450'	135°36'	118'
131'	18645'	135°36'	131'
125'	16445'	135°36'	125'
126'	18325'	135°36'	126'
135'	18518'	135°36'	135'